

Scada Radio

Data Acquisition in Remote Areas

- Compact weather proof box
- RS-232 interface
- DC power supply
- 10 ft. Epoxy coated tower mast
- Whip antenna
- Polling software

SCADA RADIO



Electronia's Scada system is a complete solution for data acquisition applications in remote areas. Designed and packaged for independent and unmanned operations in remote areas. The package consists of the following: A 5-watt radio enclosed in a

- Compact weather proof box
- RS-232 interface
- DC power supply
- 10 ft. Epoxy coated tower mast
- Whip antenna
- Polling software

Consists of a RS-232 interface to communicate with the Remote control units and sensors. The system is powered by a DC battery and can be connected to a Solar Panel, for uninterrupted operation in Remote areas.

The Polling software that is connected to the master station polls the remote terminals in a sequence and retrieves information by activating the transmit function of the remote. The software has the functionality to query a single or multiple remote units and also provide a graphical representation of the parameters that are gathered. The software is able to perform a complete analysis of the data or just pass it to the Control System of the users over a network or RS-232 interface.

Electronia's Scada system supports data rates of up to 9600 bps and is backed by a two year warranty



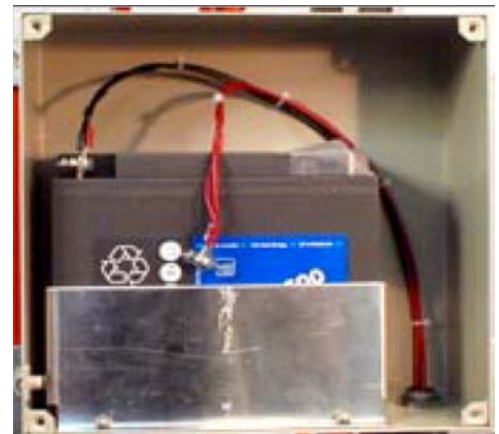
General

Frequency Range	136 – 174 MHz, 403 – 430 MHz, 450 – 470 MHz
No of Channels Selectable	32 channels
Channel Spacing	25 kHz or 12.5 kHz
Channel Guard	39 EIA CTCSS Tones
Power Supply	12 V DC
RF Power Output	5 Watts
Tx Supply Current	2.75 A at 5 watts
Rx Supply Current	0.5A
Operating Temperature	0 ° C to +70 ° C
Humidity	90% at 50 ° C
Dimensions	250 x 250 x 100 mm (WxDxH)



Specification

Data Rate	2400, 4800. or 9600
Data Format	Asynchronous
Signal Level	RS-232
Handshake Protocol	Full: RTS, CTS, DCD, DSR, DTR Data Only: (3 wire) Requires TD, RD and SG
Data Connector	9 Pin D, Female, DCE
RF Modulation data rate	2400 bps
Sensitivity	1X10-5 BER at 14dB SIN
Channel Option	Half Duplex
Data Protocol	Transparent or Protect
Channel Access	Master - Slave
Packet Size	1 – 5000 characters
Transfers	Individual, Group



Options

- Solar Panel
- Mounting Tower
- Whip Antenna

